



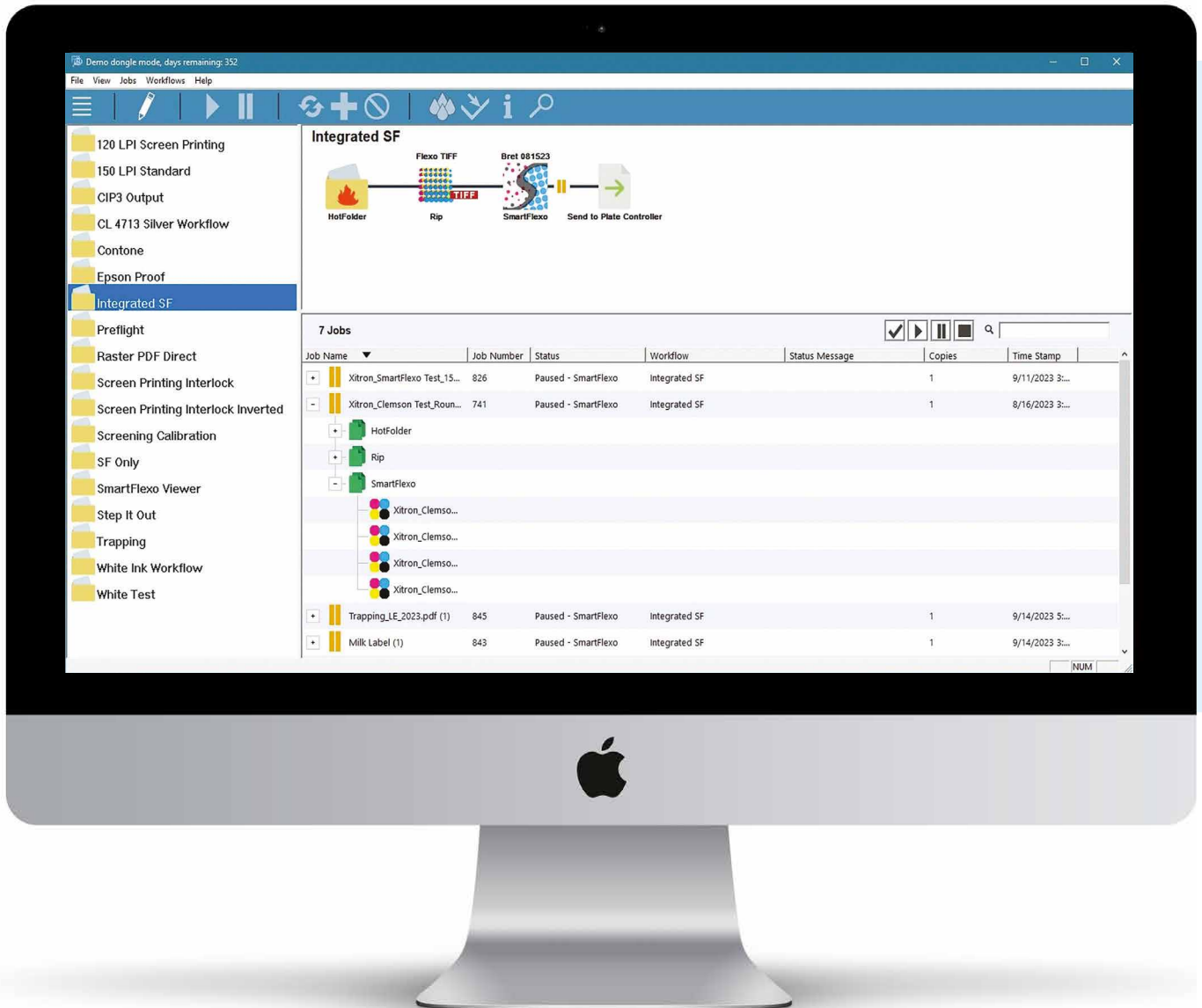
Navigator Flexo Suite



A bold new direction
for Flexo Prepress

Take your efficiency and quality
to the highest level with...

Navigator Flexo Suite.



Xitron's **Navigator Flexo Suite** is a tightly integrated collection of workflow tools designed specifically for use with today's Flexographic Computer-to-Plate systems. It's a modular concept that allows the user to create precisely the functionality they require, based on the type of printing they do.

Navigator Harlequin-based RIP

- Process PostScript, PDF and EPS files
- PDF 2.0 compliant
- Fast, consistent, and accurate rendering
- User-defined resolutions up to 9,600 dpi
- Precision flexo screening
- Selectable dot shapes
- ColorPro Color Management Module



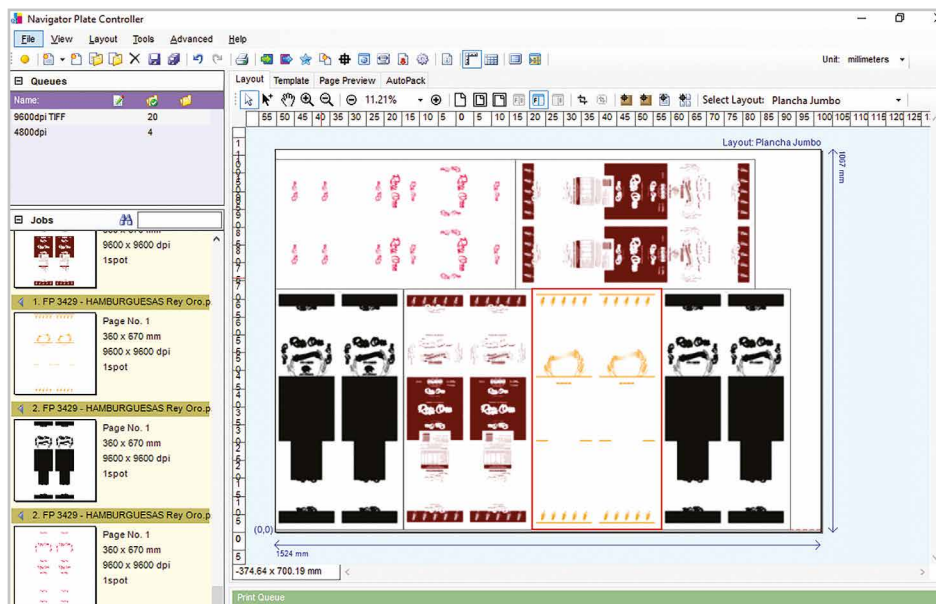
More than 45,000 Navigator installations worldwide.

Navigator Workflow

- Client/Server system with Mac/Win clients installed on workstations throughout the shop
- Add jobs through drag and drop, hot folders, or direct print
- Complete job control from start to finish
- Real time progress display
- Accurate pixel level preview
- Archive jobs for reprinting

Optional Features:

- Raster PDF soft-proofing
- Job pre-flighting and ink remapping
- Add more user clients
- Color-managed output to Epson SureColor



Navigator Plate Controller

- Drag and drop to assemble jobs and plates
- Move, rotate, and add jobs by clicking and dragging them into position
- Auto Crop generates an output image that prevents wasting unused plate areas

Screening Template Editor



Screening Templates Curves

Screening Template Name

2400

Resolution: 2400 + Screen Level: 1048 (256-65536) Screen Angle Set: Flexo Curve: Trial 1 081... Defined Spot Colors: +

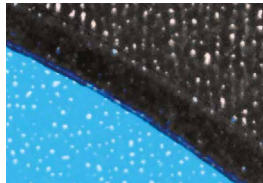
Dot Shape: Cyan: SmartFlexo Magenta: SmartFlexo Yellow: SmartFlexo Black: SmartFlexo Default Spot: SmartFlexo
 Screen Frequency: 150 150 150 150 150 +
 Screen Angle: 7.5 67.5 82.5 37.5 37.5 +

Highlight Area: SmartDot Zone (max dot size): 0% - 7.0 Minimum SmartDot Size: 0% - 0.5 Level of SmartDot: (1-9) 2
 Shadow Area: SmartDot Zone: 100 50% - 100% Rotate 90 SmartCell Zone: 90 50% - 100% SmartCell Alignment: AM Alignm... SmartCell Size: 3x3 pix SmartCell Density: 3 Level SmartCell Premium SmartCell Boundary Width: 2 Pixels

SmartFlexo



Standard

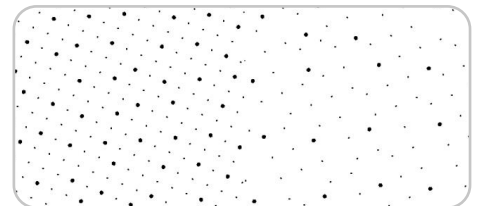


SmartFlexo Screening

- Intelligent screening module is completely configurable to your printing conditions
- Specify minimum dot, supporting dots, and alignments
- Automated templates



- Remove pixels for better coverage in solid areas



- Specify transition from AM to FM for superior highlight and shadow control

Navigator Flexo Suite Version Comparison

	Navigator Workflow	Harlequin RIP	Plate Controller	Screening Technology	Vector Trapping	Tabular Step & Repeat	PACKZ®
Flexo Suite : Lite	✓	✓	✓	Harlequin	Optional	Optional	Optional
Flexo Suite	✓	✓	✓	SmartFlexo	Optional	Optional	Optional
Flexo Suite : Label	✓	✓	✓	Harlequin	✓	✓	Optional

Tabular Step & Repeat – For rectangular and irregular-shaped labels and flexible packaging

PACKZ® – Advanced PDF editor

DISTRIBUTER ZA JUGOISTOČNU EVROPU:

TAURUS PRESS DOO

+381 64 1340740

ctp@cron.rs

www.cron.rs

SERBIA - BELGRADE

+385 99 4477468

ctp@cron.com.hr

www.cron.com.hr

CROATIA - ZAGREB



PRINT SOFTWARE INNOVATION