



# Navigator

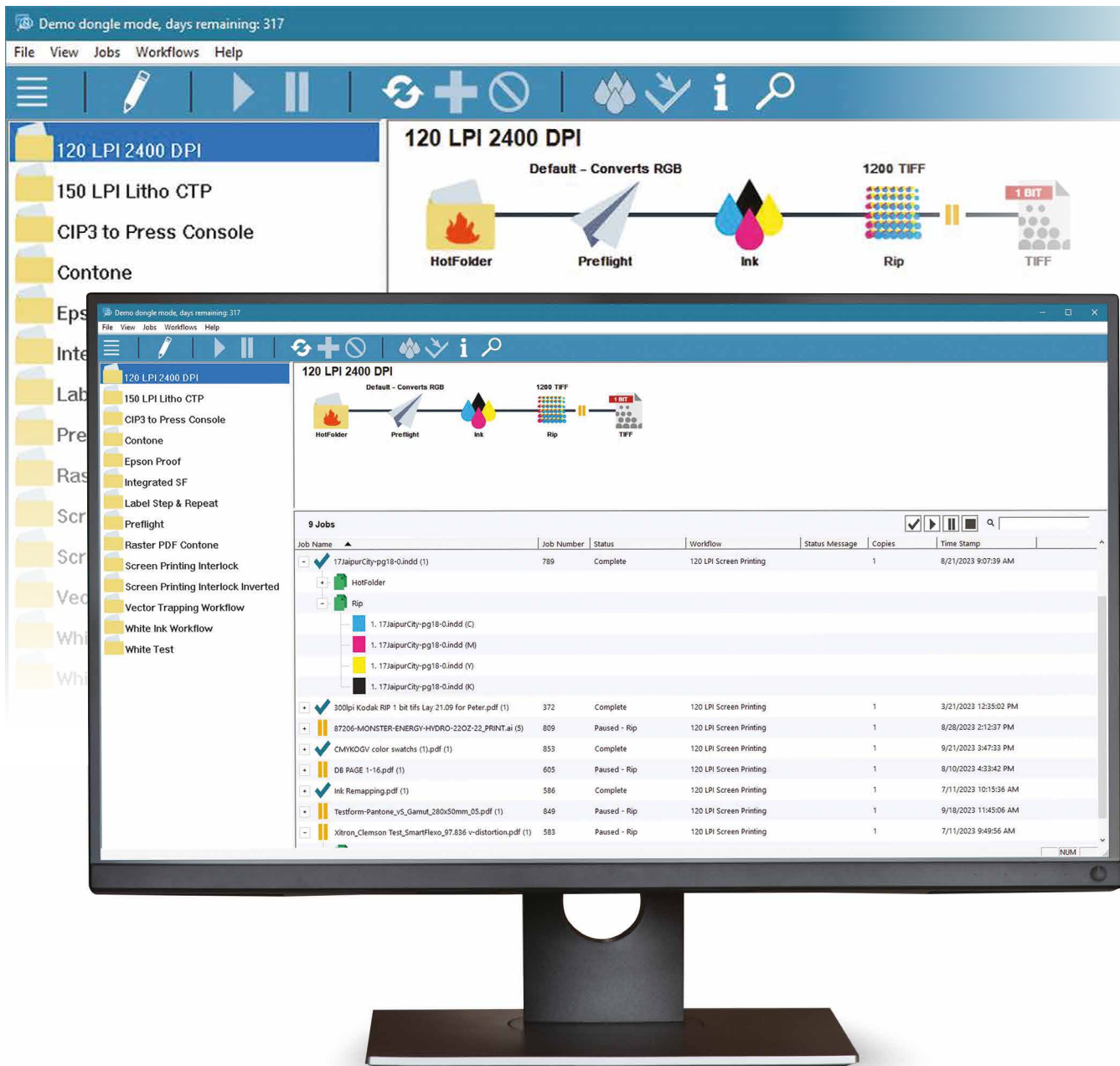
## RIP and Workflow



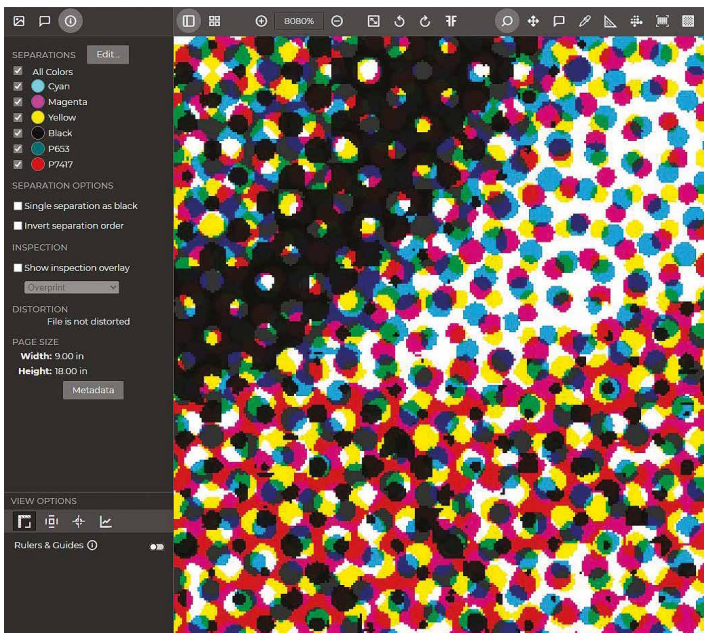
The Path to Prepress Independence

Chart your course  
for productivity with...

# Navigator.



Xitron's Navigator RIP and Workflow prepress management tools move jobs efficiently from input to completion. Whether your application is offset, label, packaging, digital, or a combination, Xitron can customize a Navigator system to suit your needs and budget.



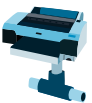
**More than 45,000 Navigator installations worldwide.**



**Low Ownership Cost** – Prolong the life of your expensive computer-to-plate systems simply by updating the software to Navigator.



**Accurate Interpretation** – Native PDF processing means features like transparency are handled cleanly and correctly. Interpretation errors are greatly reduced.



**Network Access** – Cross platform compatible client/server architecture allows jobs to be accessed from anywhere, not just at the output device.



**Scalable** – Build a prepress system that suits your exact needs. Pay only for the features that you require.



**Pixel Level Preview** – View RIPed data without halting the RIP. Choose from multiple magnifications, single plates, or combinations, spot colors, and traps.



**Job Tracking and Search** – Search across all workflows in real time by ticket number, customer, job, date, or a combination of several key fields.



**PDF 2.0 Compatible** – Take advantage of PDF 2.0 feature support such as page-level output profiles, black point compensation, and spectrally defined spot color values.



**Device Support** – Most major markets and printing methods are supported, including offset, flexo, digital, commercial, packaging, labels, and more.

# Optional Navigator Features

PDF Creation	Pre-Flighting
Raster PDF Output for Soft Proof	Ink Key Setting
In-RIP Trapping	Imposition
FM Screening	Hybrid (AM & FM) Screening
Multi-RIP Control	Archiving
Load Balancing	

## System Requirements

### RIP V13

- Core i5 PC
- 6-core, 12 MB Cache, 3.1-4.5 GHz
- Windows 10 Pro
- 8 GB RAM
- 512 GB Solid State Drive

#### OPERATING SYSTEM:

#### **64-bit Navigator is supported on:**

- Windows 10 Pro
- Windows Server 2016  
(Standard edition only, excludes Server Core configuration)

Note: Xitron interfaces require a USB 2.0 or 3.0 port for proper operation. Check the supported devices list for the most up-to-date information as some of the older devices and plug-ins will require Navigator v10 32-bit to be loaded rather than the 64-bit version.

### Workflow Server

- Core i5 PC
- 6-core, 12 MB Cache, 3.1-4.5 GHz
- Windows 10 Pro
- 16 GB RAM
- 512 GB Solid State Drive

Note: Server does not support wireless network connectivity.

### Workflow PC and MAC Client

#### MAC

- Intel or M1 Processor
- macOS 10.14 (Mojave), macOS 10.15 (Catalina), macOS 11 (Big Sur), macOS 12 (Monterey)

#### PC

- 2 GHz CPU
- 160 GB hard drive
- 4 GB RAM
- Gigabit (1000 Mbps) Network Interface
- Windows 10 Pro